

AZ Insider: Want to Own This 54-Acre Estate near Phoenix?

Written by Written by Kathy Shayna Shocket

Monday, 26 May 2014 18:35 - Last Updated Thursday, 05 June 2014 11:59

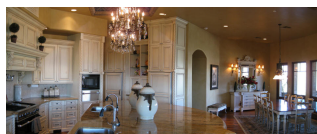
Kathy Shayna Shocket has the inside scoop on the stories that make headlines.



Kathy gives us a peek inside the mansion with its own quarter-mile gated private entrance.

How would you like to own both a 10,000 square-foot Tuscan style mansion and the 54-acre mountain it sits on? The estate, amidst an astonishing array of saguaro cactuses has its own private paved natural trail and a quarter mile gated private entrance. The price tag- is \$7.5 million.

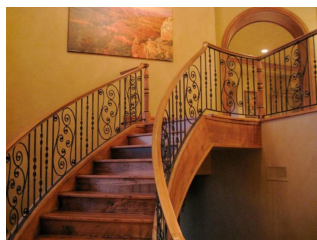
If that's not in your price range, or you're not one of the celeb types looking for privacy in a unique nature setting or a corporate mogul seeking a getaway home (the realtor's lips are sealed as to who has inquired about the home); here's a peek inside.



The six-bedroom, seven-bath home, with a Tuscan ambiance also boasts a home theatre, video security, 150-year-old oak flooring taken from a Midwest warehouse, magnificent chandeliers and a variety of skylights, including the skylight shaft illuminating the kitchen and its beautiful European cabinetry.

Not only does the home have patios on every side of the house, but the scenic views can be seen from just about every room, with the exception of a few of the bath rooms and the elevator!

Yes, an elevator! And when one is in the mood to take the stairs - the staircase is inspiring!



The pool complex is perfect for entertaining, or a place for guests to relax within the nature setting and features a \$650,000 pool ramada. By the way, the listing agent is a celebrity himself. **Preston Westmoreland** of **Russ Lyon Sotheby's International Realty** is the well respected former talk show host who was on the air at KTAR radio for 26 years. "There may be bigger houses and more expensive properties on the market, but you won't get your own private mountain," says **Preston**. "I haven't seen home on more land than this in the entire Phoenix area."

The property is adjacent to Black Mountain, just outside the town of Cave Creek. It's so secluded, you almost have to view it from the air to appreciate its location. The sprawling home was built by well known luxury home builder **Tom Argue**, one of the top builders of Silverleaf in Scottsdale, Arizona.

