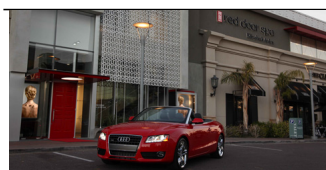


Red Door Spa Debuts New Line

Written by Victoria Fouts

Monday, 08 July 2013 14:35 - Last Updated Friday, 12 July 2013 14:26

Red Door Spa Professional is a new line of skin care products designed to bring home the luxury of Red Door Spa while using the latest science and finest ingredients.



This past March, Elizabeth Arden Red Door Spa launched a new skin care line composed of 43 products. Cornelia Zicu, Global Chief Creative Officer for Red Door Spa, speaks of her desire to share the brilliance of the spa with those at home. "Each Red Door Spa Professional Product addresses a critical step in the spa treatment and skin care process. Now our guests have access to the same products used in our exclusive spa treatments, which are among the best formulations in the industry." The entire Red Door Spa Professional line combines the latest scientific research and uses the finest ingredients. Each product is unique in its configuration and utilizes different scents, oils and acids. Some of the scents and extracts found in the 43 products are cranberry, tangerine, rosemary, peppermint, milk and honey, aloe vera, olive oil, papaya, and lemon. The Red Door Spa Professional skin care line can be divided into three collections- Customized Daily Essentials, Intensive Solutions, and Body Renewal.

Intensive Skincare Solutions

Features 16 concentrated, targeted treatments carefully formulated to address skin concerns and problems, ranging from premature skin aging, redness and discoloration to skin dullness, sensitive skin, and effective solutions for the treatment of acne.



Body Renewal

Features 10 luxurious body care products that are the used in the legendary Red Door Spa signature treatments and services. These products revitalize the skin and restore essential moisture for a healthy, youthful and toned appearance.



Customized Daily Essentials

A collection of daily cleansers, toners, moisturizers, masks and sun protection created for every age, skin type, and lifestyle.

The Customized Daily Essentials collection offers four different sets, each correlating to those with sensitive, dry, oily, or normal skin types. The items in this collection should be used as a daily regimen to keep skin looking beautiful and fresh. Each part of the set serves to brighten, hydrate, and smooth the skin to keep it looking flawless.

The Intensive Solution products are designed to target specific skin-related issues such as uneven tone, redness, and aging. They are specially made using the latest science to illuminate and clarify skin. This collection offers defense against any flaw found on the skin by combating it with amino acids, minerals, peptides, and vitamins like A, C, D, E, and K which are crucial to the development of healthier skin. The Illuminating Glycolic Exfoliating Pads will help skin feel softer by gently removing dirt and dead skin.

Lastly, the Body Renewal collection is composed of a variety of body creams, salt and sugar scrubs and spray which will leave skin feeling softer and moisturized. This part of the Red Door Spa Professional line really brings home the feeling of a day at the spa with luxurious, revitalizing body care essentials.

The Red Door Spa Professional skin care line is available exclusively at Red Door Spa, located at Phoenix Biltmore Fashion Park, the Wigwam Golf Resort & Spa, and the Westin La Paloma Resort and Spa. Products cost between \$22- \$120. <http://www.reddoorspas.com/>