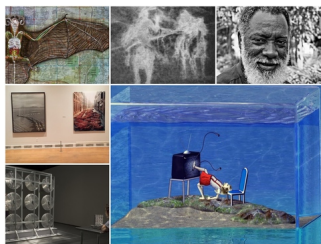


Third Wednesday Tours at the ASU Art Museum

Written by Nicole Royse

Tuesday, 08 March 2016 23:12 - Last Updated Wednesday, 09 March 2016 09:08



Time to head to the ASU Art Museum for a great selection of exhibitions and Third Wednesday Tours this month spotlighted exhibition 'Watertight: Sandra Ramos'.



This week the Third Friday Tour which meets in the ASU Art Museum Lobby on March 16th at 1:30 pm, patrons can expect a wonderful "behind-the-scenes exhibition tour" lead by Associate Director, Heather Sealy Lineberry and Windgate Curatorial Intern, Kev Nemelka. The tour promises "the inside scoop on the making of the exhibition and hear the stories behind the art".



"Watertight" features internationally exhibited Cuban artist, Sandra Ramos currently showcasing eight new video animations. Her artwork explores the relationship between Cuba and the U.S. Ramos work utilizes "witty figures and settings draw from literature, popular media and the island of Cuba, and combine in narratives that explore provocative issues of immigration and international borders, containment and power structures, illusions and lost utopias", according to the ASU Art Museum. The animations are on loan from the collection of I. Michael and Beth Kasser and the Evelyn Smith Exhibition Fund supports the exhibition. This wonderful exhibition will be on view until May 28th.



Plus don't miss 'Participant: Photography by Spencer Tunick from the Stéphane Janssen Collection, highlighting a variety of about 20 works from the Janssen collection, including photography, installation and performance. Artist Spencer Tunick has been creating these unique stage photographs which utilize "images of multiple nude figures in urban and rural public settings" since the 1990's captured all around the world.

Third Wednesday Tours at the ASU Art Museum

Written by Nicole Royse

Tuesday, 08 March 2016 23:12 - Last Updated Wednesday, 09 March 2016 09:08



"Superflex: Superfake/The Parley" is a fascinating showcase of new images, video and sculptural works created by the Danish artist collective SUPERFLEX. Focusing on a painting attributed to Frederic Remington for the ASU Museum collection, the commissioned project to examine issues of authenticity, reproduction and value, this will be on display through April 30th. Another must-see exhibition is "Between Earth and Sky: Southwest Art in China" showcasing works on paper by artists from the American Southwest at universities in Sichuan, Nanjing, Shanghai and Xi'an on display until May 28th. Also be sure to stop by the ASU Art Museum Brickyard, see 'Paul J. Smith Portraits: A Photographic Journal of the Ceramic Community, which pairs contemporary ceramics spotlighting 20 pieces of Smith's work with works from the ASU Art Museum's collection on view through March 26, 2016.



The ASU Art Museum is located at 51 E. 10th Street, Tempe and admission to the museum is free with donations encouraged. Museum hours are Tuesday: 11am–8pm, Wednesday–Saturday: 11am–5pm and closed on Sunday, Monday and holidays. For more information about the ASU Art Museum visit <http://asuartmuseum.asu.edu/exhibitions/>. *All Images are courtesy and copyright of the ASU Art Museum and aforementioned artists.