

Winter Arrives at the Shemer Art Center

Written by Nicole Royse

Tuesday, 01 December 2015 10:44 - Last Updated Tuesday, 01 December 2015 11:22

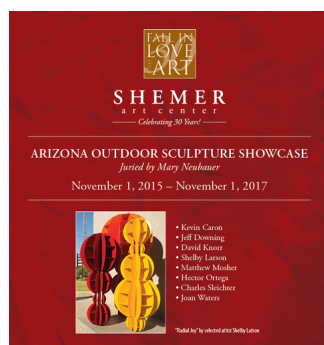


Round up the family and plan your visit to the Shemer Art Center and enjoy WINTERTIDE and Arizona Outdoor Sculpture Showcase!

Enjoy the winter season with the Shemer Art Center's latest exhibition *WINTERTIDE*. "*WINTERTIDE*" is an exhibit of work showcasing winter with a whimsical twist", states the Shemer. This exhibition was juried by Bonnie Lewis who selected an excellent group of artists including Barbara Bagan, Logan Bauer, Mark Carroll, Val Hunt, Robbie O'Carroll, Ann Osgood, Katheleen Q. Parks, Judy Robbins, Rhonda Thomas-Urdang, Archie Tucker, and Joan Waters. Showcasing a variety of mediums other works of art are in oil, watercolor, mixed media, photography, wood and steel, and more. Don't miss the opening reception this Thursday, December 3rd from 6-8pm. *WINTERTIDE* will be on display through December 31, 2015.



Also on view is *Arizona Outdoor Sculpture Showcase*, a juried group exhibition by Mary Neubauer. The artists showcased in this exhibition include Kevin Caron, Jeff Downing, David Knorr, Shelby Larson, Matthew Mosher, Hector Ortega, Charles Sleichter, and Joan Waters. Highlighting an eclectic selection of sculpture, Arizona Outdoor Sculpture Showcase will be on display for an entire year through November 1, 2017.

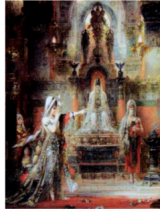


Next up in the Shemer Art Center's Art Renaissance Series is a presentation and slide show by Michel Sarda focusing on the great renaissance artist Gustave Moreau. This lecture will be on Thursday, December 10 from 6:15 to 7:45 pm and are only asking for a \$5 contribution for refreshments and snacks, courtesy of the Art Renaissance Foundation.

Winter Arrives at the Shemer Art Center

Written by Nicole Royse

Tuesday, 01 December 2015 10:44 - Last Updated Tuesday, 01 December 2015 11:22



Gustave Moreau
1826-1898

The son of a Parisian architect who soon recognized his talent, Gustave Moreau is a fascinating oddity on the French art scene during the second half of the 19th century. While following the academic trend of dealing with mythological and biblical subjects, at a time when Manet and his Impressionist friends were reinventing the art of painting, Moreau created an entirely personal, poetic language that owed him the reputation of an eccentric. A critic even wrote that his work was "a patchwork of Manet's created by a German student relaxing by reading Schopenhauer" (Today, we might take it as a compliment). Moreau's inventiveness and magical sense of light earned him the label of "Symbolist" — which later influenced the Surrealist movement. At the end of his life, he was the teacher of Matisse and Rouault.

Art Renaissance Series
Presentation and slide show by Michel Sarda

Thursday, December 10
from 6:15 to 7:45 pm

\$5 contribution to refreshment and drinks
Shemer Art Center, 5005 E. Camelback Rd., Phoenix 85018

The Shemer Art Center is a beautiful and intimate contemporary art museum and arts education center Operated by the Shemer Art Center and Museum Association (SACAMA) and the City of Phoenix, focusing on promoting and educating about the visual arts with exhibitions, lectures and classes. They also boast an extensive permanent collection with over 200 artworks by Arizona artists in a variety of mediums and subjects.



SHEMER
ART CENTER

The Shemer Art Center is located at 5005 E. Camelback Road, Phoenix 85018. Open to the public Tuesday through Saturday 10am until 3pm, with extended evening hours on Thursdays from 6:30-8:30pm. Admission is free with a suggested donation of \$7 per person or \$10 per couple and parking is free! For more information about this exhibition or the artists it features please visit the Shemer Art Center website for more information: <http://www.shemerartcenter.org>. Be sure to Like them on [Facebook](#) and follow them on twitter at [@ShemerArt](#).