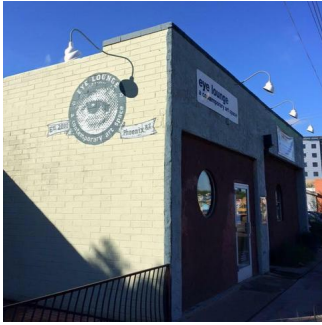


Gallery Corner: Eye Lounge

Written by Nicole Royse

Tuesday, 17 November 2015 21:09 - Last Updated Tuesday, 17 November 2015 21:15



Eye Lounge is a contemporary art space and artist collective that showcases both established and emerging artists based in Arizona founded in 2000.



As a founding member of Roosevelt Row, they have helped cultivate numerous artists throughout its 15 years and have established itself as a vital space and major component of our art community. They have always strived to give artists the freedom to push and expand their artwork while helping the artists be active members in the art community while providing them with extensive exposure to patrons, curators and other artists.



Eye Lounge is a beautiful contemporary space that features both a spacious main Gallery in addition to a more intimate Project Room. Currently their artist roster includes Cherie Buck-Hutchinson, Ashley Czajkowski, Turner G. Davis, Takashi Hara, Tawny Kerr, Keith Laber, Constance McBride, Ellen Nemetz, John Randall Nelson, Danielle Wood, and Christina You-Sun Park. With such a diverse roster of artists Eye Lounge highlighting a wide range of artwork including painting, drawing, sculpture, mixed media etc. As an artist collective, membership lasts between 1 to 3 years allowing the artists the opportunity to showcase their works in the 2 galleries the space features.



Opening this Friday, November 20th, 2015 is the solo exhibition of Ellen Nemetz with "Inquietude" in the Main Gallery highlighting her representational style while depicting animals in unusual situations "Nemetz creatures portray feelings in an entertaining yet somewhat enigmatic way inviting the viewer to look deeper". Turner G. Davis is showcasing "New Drawings" works on paper that highlight "his narrative investigations using pen and ink on distressed surfaces" in the Project Room and both exhibitions will be on display through December 13th, 2015. To conclude the year Eye Lounge will present a group exhibition showcasing current members of the Eye Lounge Collective, titled

Gallery Corner: Eye Lounge

Written by Nicole Royse

Tuesday, 17 November 2015 21:09 - Last Updated Tuesday, 17 November 2015 21:15

"nä-?stal-j?", which will open to the public on Third Friday, December 18th, 2015.



Eye Lounge found its home in downtown located to at 419 East Roosevelt Street, Phoenix, Arizona 85004. They showcase two new exhibitions every month, hosting regular gallery hours during the week on Friday 6-9pm, Saturday 1-5pm, and Sunday 11-3pm. They also participate in the monthly First Friday ArtWalk, which draws thousands to the gallery and offering a Third Friday Collector's Night when they host a more intimate reception with the featured artist. Want to learn more about this diverse and fascinating artist collection online at www.eyelounge.com and follow them on twitter at @eyelounge.*Images courtesy of Eye Lounge and Nicole Royse.

