

Elegance Meets Contemporary Living at 4 Twenty One West Tempe

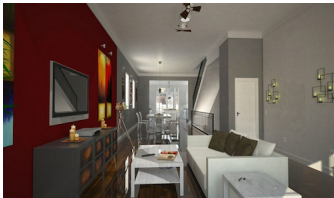
Written by Christina Tetreault



Real estate developer Irene Clary and renowned architect Bing Hu have just broken ground on their third luxury residential project. Located near Tempe's vibrant Mill Avenue district, [4 Twenty One West](#) (421 West 6th Street) will feature 24 exquisite three- and four-story townhomes, ranging in size from 1,553 to 2,270 square feet. Each home provides two outdoor balconies on the main level, and a two car private attached garage that allows for direct entrance into the home.

For this particular project, the pair turned to their hometowns for inspiration. Clary recalled the classical brownstone dwellings of her native Toronto, while Hu was drawn to the urban and vertical living spaces of Beijing.

"It's going to be a really beautiful community for this part of town," said Clary. "The exteriors are very classic and inspired by a timeless architectural style that actually originated in Bath, England." The interiors, she said, will be transitional and contemporary, with open floor plans, 11-foot ceilings and hardwood floors on the main floor, and 9-foot ceilings on the third and fourth floors. "Standard" interior features, usually offered as upgrades elsewhere, include granite countertops, Kohl plumbing fixtures, stainless steel Bosch appliances, and low-E Milgard windows.



Lifestyle driven amenities include a quiet Zen Garden and generous, private exterior balconies. "We created an outdoor living space that gives residents a place to relax and get to know one another," Clary said. "And when they want to be a part of this exciting area, they can hop on a bike and ride to the lake or walk over to any of the nearby shops and restaurants and other amenities downtown Tempe has to offer."

Located on West 6th Street, between Farmer Ave. and Wilson, these homes are within walking distance to the Light Rail, Gammage Auditorium, Tempe Center for the Performing Arts, Tempe Town Lake and the new Whole Foods market opening at the corner of Ash and University.



Prices range from about \$365,000 to \$534,000. A percentage of sales will benefit Casa Center for Positive Social Change, a Phoenix nonprofit that promotes positive relationship and communication skills in an effort to reduce bullying, abuse and violence.

Clary and Hu are also working on SOHO Scottsdale, a pioneering live-work-play loft community off of Bell Road and the Loop 101. For more information, visit www.catclar.com or [click here](#).